

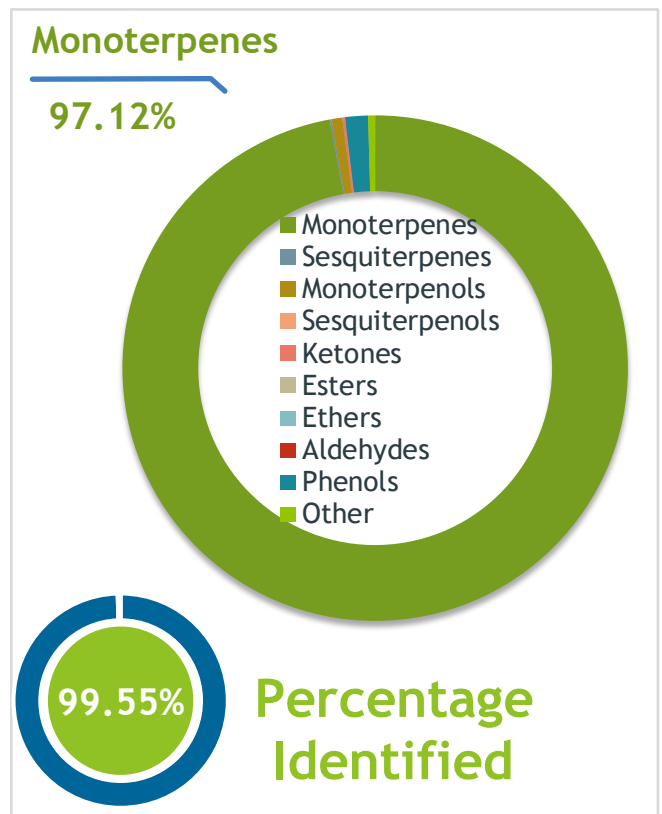
Client **LIVEGOOD** Source 

Frankincense (Boswellia serrata)  
LGE0281205-002 - India

**Sample**  
Frankincense (Boswellia serrata)  
Identification #: LGE0281205-002  
Type:..... Essential Oil  
CAS Number:... 97952-72-2  
**Live Good**

**Properties**  
Country Of Origin | India  
Specific Gravity | NT  
Refractive Index | NT

**Primary**  
**53.58%** | alpha-Thujene  
**10.23%** | alpha-Pinene  
**7.77%** | Sabinene



**Result**  
**APPROVED**  
12/2/2023

**Conclusion**  
No adulterants, diluents, or contaminants were detected via this method. This oil meets the expected profile for genuine Essential Oil of Frankincense (Boswellia serrata)  
Internal Number: | EVS-5955



**Essential Validation Services**  
747 SW 2nd Ave IMB 12 Suite 306  
Gainesville, FL 32601  
317.361.5044 |  
<https://essentialvalidationservices.com/>  
*Alan Christen*

Monoterpenes	97.12%	97.12
Sesquiterpenes		0.11%
Monoterpenols		0.69%
Sesquiterpenols		0.00%
Ketones		0.16%
Esters		0.00%
Ethers		0.01%
Aldehydes		0.00%
Phenols		1.46%
Other		0.45%

ESSENTIAL VALIDATION SERVICES | 747 SW 2ND AVE GAINESVILLE, FLORIDA 32601 | 317-361-5044

Client

LIVEGOOD

Source

Frankincense (*Boswellia serrata*)

LGEO281205-002

Total Percentage		99.55%		
Number	RT	Area %	Compound Name	Chemical Family
1	3.67	0.02%	Toluene	Simple Phenolic
2	7.39	0.02%	Bornylene	Monoterpene
3	7.84	0.14%	Hashishene	Monoterpene
4	7.94	0.01%	Tricyclene	Monoterpene
5	8.19	53.58%	alpha-Thujene	Monoterpene
6	8.38	10.23%	alpha-Pinene	Monoterpene
7	8.75	0.74%	Thuja-2,4(10)-diene	Monoterpene
8	8.96	0.18%	Camphene	Monoterpene
9	9.91	7.77%	Sabinene	Monoterpene
10	10.07	1.81%	beta-Pinene	Monoterpene
11	10.64	2.29%	Myrcene	Monoterpene
12	11.19	0.06%	Pseudolimonene	Monoterpene
13	11.30	3.12%	alpha-Phellandrene	Monoterpene
14	11.41	5.01%	delta-3-Carene	Monoterpene
15	11.76	0.60%	alpha-Terpinene	Monoterpene
16	11.89	0.12%	o-Cymene	Monoterpene
17	12.11	2.73%	para-Cymene	Monoterpene
18	12.32	6.55%	Limonene	Monoterpene
19	12.68	0.37%	(Z)-beta-Ocimene	Monoterpene
20	13.14	0.32%	(E)-beta-Ocimene	Monoterpene
21	13.62	1.10%	gamma-Terpinene	Monoterpene
22	14.13	0.08%	trans-Sabinene hydrate	Monoterpenol
23	14.84	0.29%	Terpinolene	Monoterpene
24	15.38	0.01%	alpha-Pinene oxide	Monoterpene Ether
25	15.56	0.17%	Linalool	Monoterpenol
26	16.29	0.16%	alpha-Thujone	Monoterpene Ketone
27	16.61	0.02%	cis-para-Menth-2-en-1-ol	Monoterpenol
28	16.86	0.08%	Alloocimene	Monoterpene
29	17.32	0.02%	cis-Sabinol	Monoterpenol
30	19.17	0.38%	Terpinen-4-ol	Monoterpenol
31	19.87	0.02%	alpha-Terpineol	Monoterpenol
32	20.01	1.44%	Methyl chavicol	Phenylpropanoid
33	27.79	0.02%	alpha-Copaene	Sesquiterpene
34	28.10	0.09%	beta-Bourbonene	Sesquiterpene

ESSENTIAL VALIDATION SERVICES | 747 SW 2<sup>ND</sup> AVE GAINESVILLE, FLORIDA 32601 | 317-361-5044



